



## **VERIFICATION AND ACTION REPORT PT RIM CAPITAL**

### **CLARIFICATION REGARDING MIGHTY EARTH'S RAPID RESPONSE PALM OIL REPORT 22 and 23**

#### **Background**

Mighty Earth's Rapid Response Palm Oil Report 22 reported land clearance in PT RIM Capital concession area during the period of 11<sup>th</sup> September 2019 to 2<sup>nd</sup> November 2019. Satellite imagery indicated that an estimated 39 ha of forest was cleared at two locations (-2.661, 112,231) and (2.689, 112,227). The identified clearance is further reported as a repeat case in the Mighty Earth's Rapid Response Palm Oil Report 23.

#### **Verification**

Map analysis confirmed that one of the land clearance areas (-2.661, 112,231) is located outside of PT RIM Capital concession. The other location was identified as community-owned land but located within the concession area of PT RIM Capital. The company has no intentions to acquire the lands which happen to be peat. Goodhope has committed to NDPE policy since May 2017. PT RIM Capital has not conducted any land clearance since 2012 and has no plan or intention for new plantings at PT RIM Capital.

PT RIM Capital deployed a team together with village heads and community representatives from Benua Usang village and Tanjung Hanau village to conduct ground verification on Wednesday, 6<sup>th</sup> December 2019. The field verification team concluded that the alleged land clearing occurred as a result of landfires in community-owned areas on 20<sup>th</sup> September 2019. The company has made and submitted a report to local authorities on the land fires that occurred. The local authority acknowledged the report clearing all allegations to the company and recognized the company's efforts to take immediate measures to extinguish and contain the fires.

During the 2019 prolonged dry season, PT RIM Capital stepped up capacity to respond to the threat of landfires and worked with local authorities on the conservation of forest areas and mitigation of threats. Efforts included community fire awareness training; hotspot monitoring; action to directly extinguish identified fires; mapping land ownership and working together with the land owners on the prevention and control of fire threats; demarcation of fire-prone areas and high risk areas.

#### **Follow-Up Action**

It has been noted that the concession boundary used for this case is the same as the boundary as published on the GeorSPO website. An updated map will be provided.

#### **References**

[http://www.mightyearth.org/wp-content/uploads/Rapid-Response-Report-22\\_final-1.pdf](http://www.mightyearth.org/wp-content/uploads/Rapid-Response-Report-22_final-1.pdf)  
[http://www.mightyearth.org/wp-content/uploads/Rapid-Response-Report-23\\_final.pdf](http://www.mightyearth.org/wp-content/uploads/Rapid-Response-Report-23_final.pdf)

# Annex 1

## Alert Imagery (before and after satellite images)

Clearance location: (-2.661, 112.231)

Date: September 11, 2019



Date: November 2, 2019

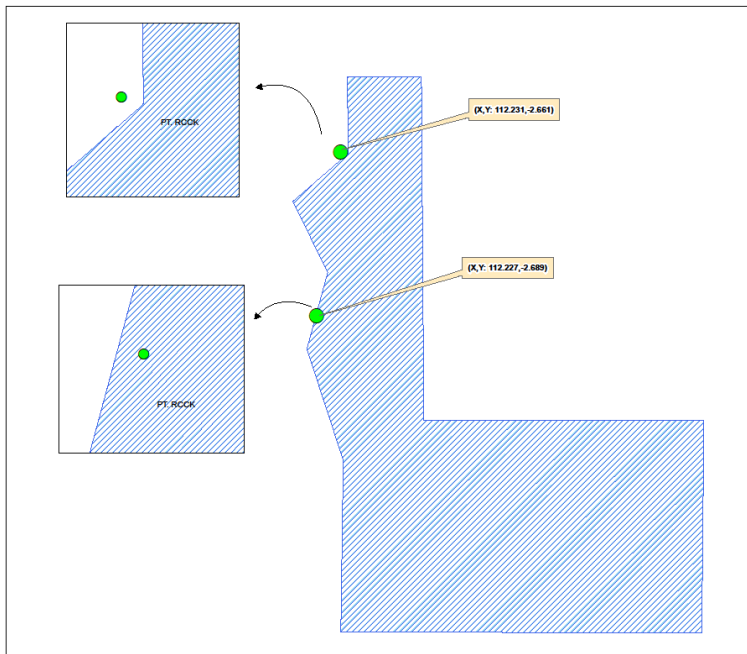
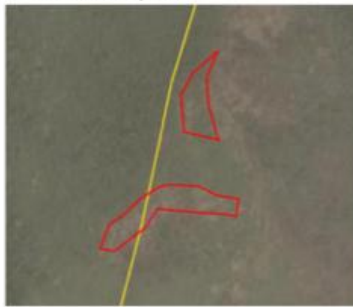


Clearance location: (-2.689, 112.227)

Date: September 11, 2019



Date: November 2, 2019



Annex 2

